



Southern California Orchid Species Society

www.socalorchidspecies.com

Officers President

Darrell Lovell
dalleval@yahoo.com

Vice President

Barbara Olson
barstan50@hotmail.com

Society Secretary

Edie Gulrich

Membership Secretary

Edie Gulrich
egulrich@att.net

Treasurer

Susan Scheffler

Directors 2015

Daniel Geiger
Ed Wise

2014

Roberta Fox
Dana Seelig

2013

Phyllis Adams
Tim Roby

Orchid Show Representative

Barbara Olson
Yolanda Brown

Orchid Digest Representative

Barbara Olson
barstan50@hotmail.com

Refreshments Coordinator

Yolanda Brown

Raffle Coordinatoor

Open

Newsletter

Roberta Fox
roberta@orchidcentral.net
(714)435-8015

Newsletter deadline is the 25th
of the month prior to the month
of issue.

Meeting is 2nd Sunday of each month, at 2 PM
Placentia Library
411 E. Chapman Ave, Placentia
(Corner of Chapman and Kraemer)

Volume 35, Issue 12
December 2012

December 9, 2012

Imaging Small Flowers: From Macrophotography to Electron Microscopy

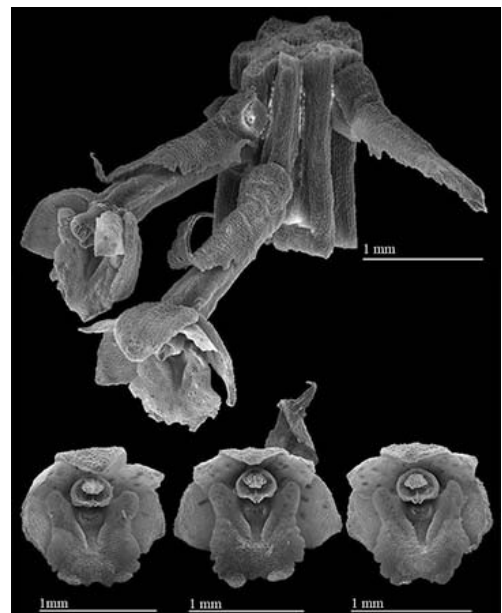
Daniel L. Geiger, PhD.

Dr. Daniel L. Geiger is a curator at the Santa Barbara Museum of Natural History in charge of Mollusca and the electron microscopy facility. He is an avid photographer using a range of techniques from 4x5" large format to SLR and photomicroscopy; he sells his images amongst other outlets through the stock photography agency <http://alamy.com>. He has used many of the microimaging techniques in his monographs of abalone and the microscopic little slit shells published this year. Daniel grows mostly miniature species in two terraria and a small greenhouse, focusing his attention on *Oberonia*. Daniel is a member of SCOSS and the Orchid Society of Santa Barbara. For further information see: <http://www.vetigastropoda.com>

(Continued, see: **Daniel Geiger, Page 2**)



Oberonia leytensis



Scanning Electron Microscope view

© Daniel L. Geiger

Daniel Geiger from Page 1

The majority of flowers of the 30,000 orchid species are small. Producing good images can be challenging. Daniel will discuss various options for taking images of small flowers, and provide some suggestions as to how to improve everybody's photography with simple techniques, as well as also showing what some advanced technology can do. Everything is richly illustrated with images of flowers from Daniel's collection.

Please bring your plants with the smallest flowers and a memory stick. You may be lucky enough to take home a stunning image of the flower of your plant!

Speaker's Choice

November speaker Doug Overstreet selected *Cattleya maxima* var. *coerulea*, grown by Roberta Fox, as his Speaker's Choice, noting that it is a rather rare color form for this species, and also tied in with his talk on *Cattleya* culture. Roberta grows this plant in the greenhouse. *C. maxima* has two distinct subspecies. The one with taller pseudobulbs (of which this *coerulea* form is an example) grows at low elevations, and definitely requires warmer temperatures. The other subspecies comes from somewhat higher elevations, and has a more compact growth habit. However, Roberta has found that her plant of the higher-elevation type also grows better in the greenhouse, although its habitat indicates that it should be tolerant of cool temperatures.

C. maxima is native to Ecuador, Colombia, and Peru. It was found first in the hot, humid lowlands around Guayaquil, Ecuador. Later, populations were found on the Western slopes of the Andes in northern Peru, southern Ecuador, and Colombia, at elevations as high as 1800 m (6000 ft.). The highland plants tend to occupy areas that are fairly dry. This may be a reason for the highland variety not doing well outside of the greenhouse in winter—orchids are better able to tolerate cold weather when they



Cattleya maxima* var. *coerulea

are dry, and our southern California winters tend to be wet as well as cool. It is also interesting to note that *C. maxima* is one of only three species of *Cattleya* that are native to Ecuador (the others being *C. iricolor* and *C. violacea*)

(See: **Speaker's Choice**, Page 3 for additional photos)

From the Member's Corner

Welcome to our newest member Pam Neil and also to our guest Alex Allen. We're looking forward to seeing you both at the next meeting. Speaking about meetings...you can note on your 2013 calendars the meeting dates for 2013: all except 2 will be on the second Sunday of the month at the Placentia Library. The **2 exceptions** will be Mothers' Day which falls on May 12th, the meeting will move to the third Sunday **May 19th** and the second meeting change will be in November for Veterans Day which falls on November 10, that meeting will move to **November 17th**, the third Sunday in November. Please mark these two changes for 2013.

Dues are now due for 2013. If you haven't paid yet, you can pay Edie at the meeting or send payment to her at 1627 W. Palais Rd., Anaheim, CA 92801. The new Orchid Conservation Alliance calendars are being ordered and will be available at the December meeting. Happy Thanksgiving to one and all!

Edie Gulrich, Membership Secretary

President's Message

It's hard to believe that we are mid-way through November and Christmas is just around the corner!

First of all, I would like to extend a big thank-you to Roberta for hosting our November meeting. I'm always amazed at how efficiently Roberta utilizes her growing space. Thanks also to everyone who brought refreshments. Welcome to our three new board members, Daniel Geiger, Dana Seelig, and Ed Wise.

As usual, Barbara did a great job arranging for Doug

Overstreet to be our guest speaker. Doug shared his extensive knowledge on successfully growing *Cattleya* orchids.

Meetings for 2013 will continue to take place at the Placentia Library on the second Sunday except for May and November when they will be on the third Sunday. See Members Corner for dates and mark your calendars..

Happy Thanksgiving to all!

Darrell Lovell, President

Speaker's Choice, from Page 2



Cattleya maxima typical color form, highland type



Cattleya maxima var. coerulea lip detail

ORCHID CONSERVATION ALLIANCE CALENDARS!

These beautiful 2013 calendars will be available at the December meeting. Support the work of OCA with your purchase, and remember that they also make excellent holiday gifts for the orchid lovers in your life!

Editor's Potting Bench

The open houses at Casa de las Orquideas and Sunset Valley Orchids December 1-2 offer one last chance for an “orchid fix” before the holiday season. The two locations are not far apart in the northern San Diego County area, and are only a bit over an hour's drive from where most of us live in Orange County. I plan on going, and hope to see you there.

Each orchid species has its special charms, but some have particularly unique characteristics that require a bit of extra attention. One is *Coelogyne flaccida*. I have found that most of the *Coelogyne*s, especially the cooler-growing ones that I grow outside, do better in a basket than a pot. There is a group of them with multiple-flowered inflorescences, which usually arch over the edge of the basket, then hang down. Other genera, with inflorescences that grow sideways or downward (such as *Gongora* and *Stanhopea*) usually manage to find the holes in the basket, follow the path of least resistance, and reach out of the basket. Occasionally a spike will get hung up and need to be freed, but generally the young inflorescence has enough substance to respond to



Coelogyne pseudobulb and inflorescence emerging from side of clipped basket

resistance from the basket and alter its course. *Coel. flaccida*, however, lives up to its name—“flaccid” is defined as soft or loose. “Floppy” describes the inflorescence. If the pseudobulb is not above the edge of the basket, the inflorescence will happily



Coel. flaccida

wind its way around the top of the media—and not hang free to open properly. If the developing spike is not spotted when it is small, it's a real challenge to coax it out to freedom without breaking it. This year, the new growth tried to squeeze out of one of the holes in the basket, before the spike developed. I cut the basket around it. The inflorescence then developed nicely, hanging out of the much larger hole that I had made in the basket. A small clipper, or diagonal cutter, is very handy for removing just enough of the basket to free a growth (or a spike), not disturbing the plant and leaving enough of the basket intact to not lose the media.

Orchids teach us patience. I have been nursing a *Prosthechea vespa* for almost four years, having obtained it shortly after I returned from Ecuador. This species grows all over Ecuador—on both sides of the Andes, at a range of elevations. In the wild, the plants can get quite large. My little plant took awhile to overcome the stress of being imported bare-root, but finally my efforts have been rewarded. Just before press time, the first flower has opened (one spike, four buds), and it is a beauty—deeper color than what I saw in the wild, perhaps due to more shade and cooler temperature. I have shown my plant this *in-situ* picture that I took while in Ecuador, to let it know to what it might aspire.

Roberta Fox, Editor

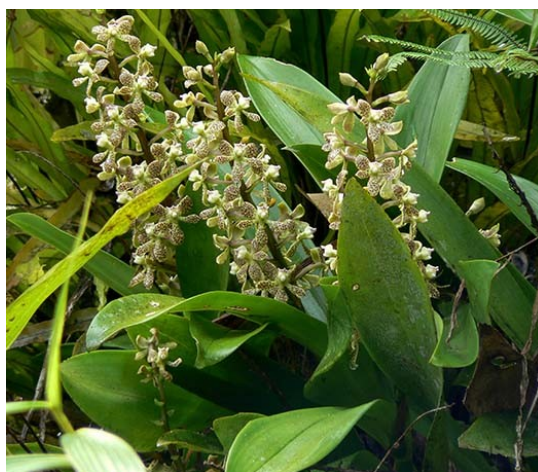
Calendar of Events

* See flyer at www.socalorchidspecies.com, select the [Events](#) link

- **Casa de las Orquideas Open House***
December 1-2, 9 AM—4 PM
170 S. Nardo Ave, Solana Beach
Info: www.orquideas.com, info@orquideas.com or (858)755-7572
 - Special guests: Andy's Orchids and other growers
- **Sunset Valley Orchids Open House**
December 1-2, 9 AM—4PM
1255 Navel PI, Vista, CA
Information: <http://www.sunsetvalleyorchids.com> or (760)310-0778
- **Orange County Orchid Society Annual Auction***
January 16, 2013—6:30 PM preview, 7:00 PM Auction begins
Yorba Linda Public Library Community Room (lower level)
18181 Imperial Highway, Yorba Linda
Info: Jan Hennessey janhennessey@yahoo.com (714)557-0604 or Edie Gulrich egulrich@att.net
- **San Diego County Cymbidium Society Annual Auction***
January 19, 2013—11:30 AM preview, 12 noon Auction begins
Lake San Marcos—Lake Pavilion, 1105 La Bonita Dr., San Marcos
Info: orchldy2@mac.com or (760)732-0055
- **Newport Harbor Orchid Expo**
February 8-10, 2013
Westminster Mall
- **Newport Harbor Orchid Society Annual Auction**
February 19, 2013—6:30 PM preview, 7 PM Auction begins
Costa Mesa Community Center, 1845 Park Ave., Costa Mesa



Prosthechea vespa, first bloom



In situ, in Ecuador

These vendors have generously supported our Society at the last Auction, and throughout the year. Please support them with your business. When you visit them, let them know that you are a member of our society. They need to know that our Society supports them.

<p>Andy's Orchids Contact: Andy & Harry Phillips 734 Oceanview Ave Encinitas, CA 92024 760-436-4235, www.andysorchids.com</p>	<p>Cal-Orchid Contact: James Rose 1251 Orchid Dr Santa Barbara, CA 93111 805-967-1312, www.calorchid.com</p>	<p>Cal-West Tropical Supply Contact: Brad & Ryan Wicks 11614 Sterling Av Riverside, CA 92503 951-351-1880, www.calwesttropical.com</p>
<p>Casa de las Orquideas Contact: Nancy & Karl Batchman 170 S Nardo Av Solana Bch, CA 92075 858-755-7572, www.orquideas.com</p>	<p>Diamond Orchids Contact: Peter Lin 834 Featherwood Dr Diamond Bar, CA 91765 909-396-0334, www.diamondorchids.com</p>	<p>Ecuagenera Contact: Ivan Portilla PO Box 01011110 Cuenca, Ecuador www.ecuagenera.com</p>
<p>Lico Orchids Contact: Lisa Humphries & Nico Goosens 309 Via Nancita Encinitas, CA 92024 760-942-4143</p>	<p>Marcel's Contact: Sonora Winward 5133 Kildee St. Long Beach, CA 90808 562-843-5951</p>	<p>Mariposa Garden Contact: Ron Hill 6664 South St Lakewood, CA 90713 562-920-5588, www.mariposagarden.com</p>
<p>Mr. Fertilizer Contact: Don Knipp 247 23rd St Costa Mesa, CA 92626 949-548-2678</p>	<p>Orange County Farm Supply Contact: Chris Roy 1826 W Chapman Av Orange, CA 92868 714-978-6500, www.ocfarmssupply.com</p>	<p>Orchids by Zeny Contact: Zeny Harrington 22920 Cajalco Rd Perris, CA 92570 951-236-0291</p>
<p>Orchids of Los Osos Contact: Michael Glikbarg 1614 Sage Ave. Los Osos, CA 93402 805-528-0181, www.orchidsoflososos.com</p>	<p>OrchidWiz 145 NE 95th Street Miami Shores, FL 33138 305-758-3596, www.orchidwiz.com</p>	<p>Outdoor Images Contact: John Remlinger 6961 Livingston Dr Huntington Bch, CA 92648 714-841-0442, www.orchidbasket.com</p>
<p>Paphanatics Contact: Norito Hasegawa 159 Monterey Rd Orange, CA 92866 714-639-1387</p>	<p>rePotme.com Orchid Mixes and Supplies 10608 Floral Park Lane North Potomac, MD 20878 301-315-2344, www.repotme.com</p>	<p>Santa Barbara Orchid Estate Contact: Alice & Parry Gripp 1250 Orchid Dr Santa Barbara, CA 93111 800-553-3387, www.sborchid.com</p>
<p>Seed Engei Contact: Satomi Kasahara 1622 Moreno St Oceanside, CA 92054</p>	<p>Sorella Orchids Contact: Nenita Sorella 100 Frenchys Cove #71 Camarillo, CA 93012 360-607-9342, www.sorellaorchids.com</p>	<p>Sunset Valley Orchids Contact: Fred Clarke 1255 Navel Pl Vista, CA 92083 760-639-6255, www.sunsetvalleyorchids.com</p>
	<p>The Rowland Collection Contact: Pat Rowland 12446 S Georgian St Garden Grove, CA 92841 714-892-3502</p>	